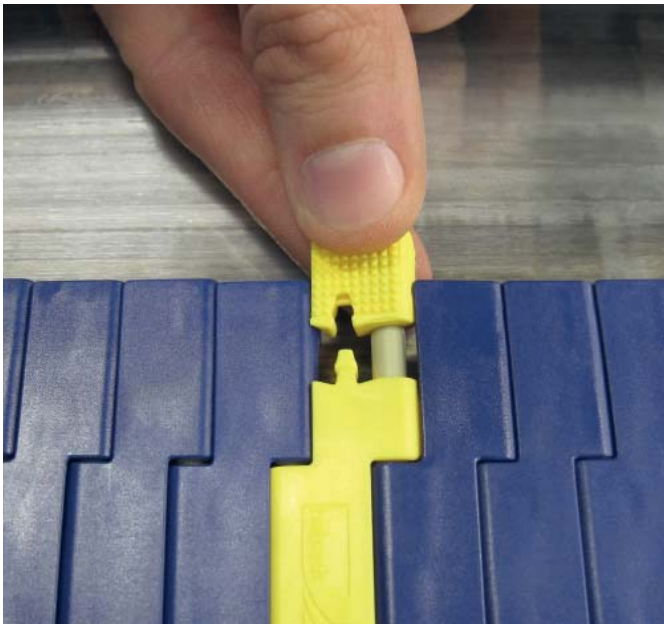


Habasit Saniclip – Cleaning Made Easy

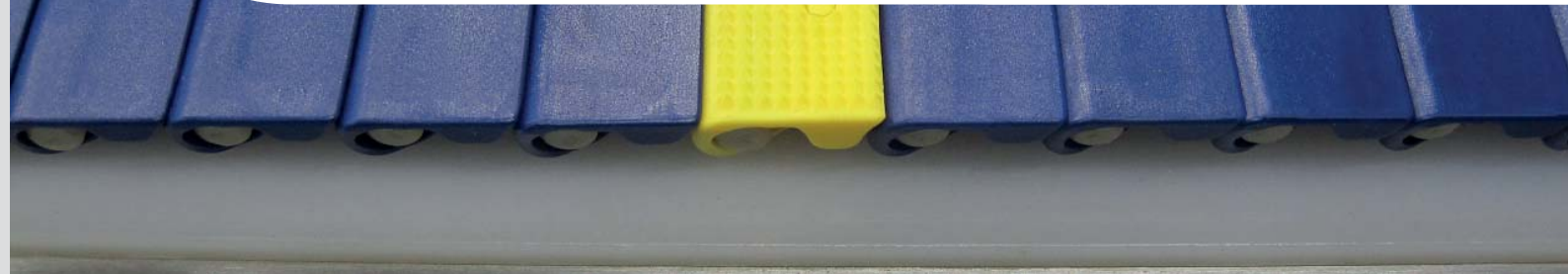
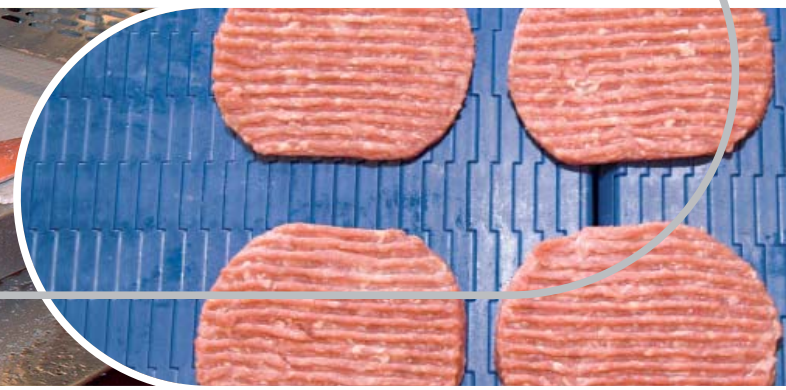
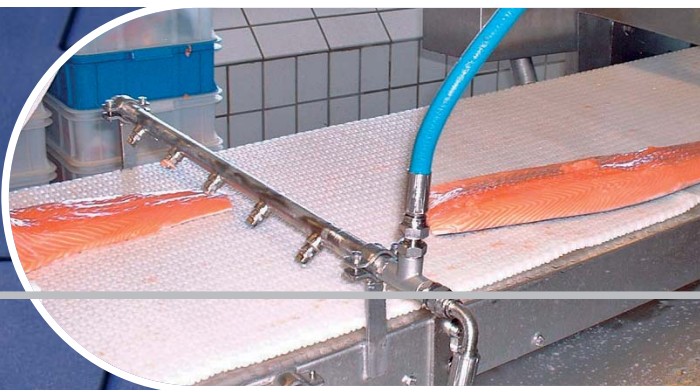
Quick belt opening system for HabasitLINK® modular belts



The Habasit Saniclip is an innovative device for quick belt assembly and easy belt sanitation.

Our Habasit Saniclip permits simple rod installation and removal in applications where frequent belt sanitation is required. Habasit Saniclip has a tactile, non-slip surface for easy removal in wet or greasy environments. Multiple Habasit Saniclips can be installed on a single belt to allow an easy opening at several locations.

- Reduces downtime
- Extracted or installed in seconds
- No tools required
- Non-slip surface for easy removal and installation in wet or greasy environments
- Available in POM yellow or blue



Habasit Saniclip – new rod system for easy installation

Quick belt opening – cleaning made easy

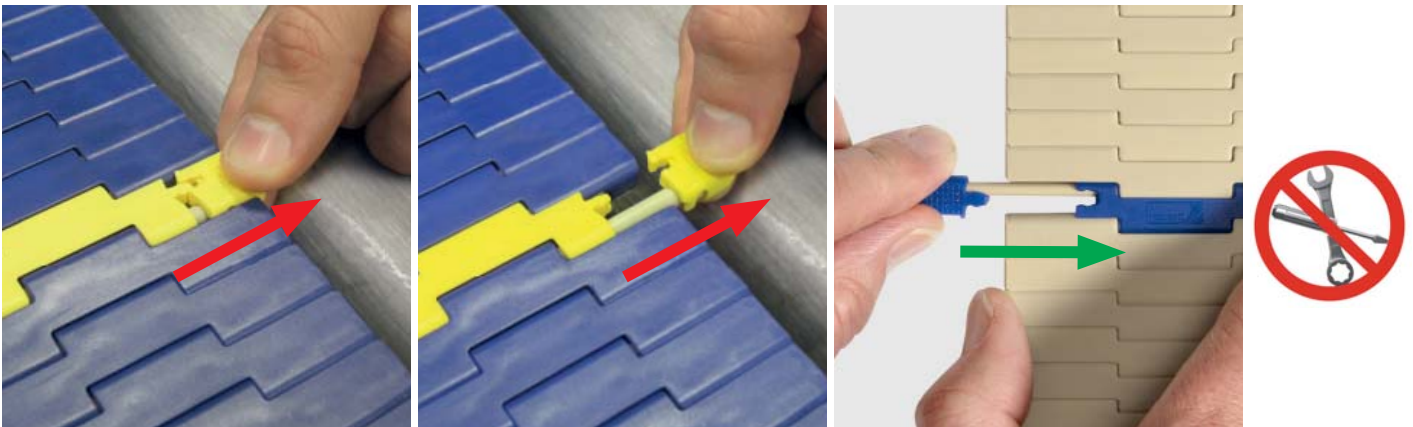
Anything that can enhance the ease of sanitation processes in the food industry is a welcome and valuable improvement. This is where the new Habasit Saniclip comes in. Its innovative new rod system is designed for easy and quick rod installation and removal for frequent belt sanitation in demanding sanitary environments. The Saniclip solves the problems of time-consuming belt removal and the requirements for extraction tools that can easily deter operators from safe sanitary practices.



Experience confirms that at least 20 minutes are required for the maintenance staff to normally arrange for proper tooling and to open a standard belt. Habasit Saniclip is robust and provided with a safe tactile feel non-slip surface for easy manual extraction even in wet and greasy environments.

Extracted and reinstalled in seconds

Habasit Saniclip plug can be manually extracted and reinstalled directly by line operators in a matter of seconds, without any tools.



Extracted...

...and reinstalled in seconds

No tools needed

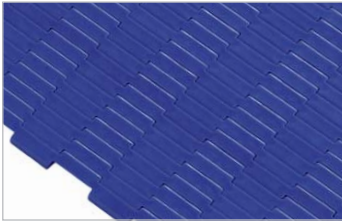


APEX
INDUSTRIAL AUTOMATION, LLC

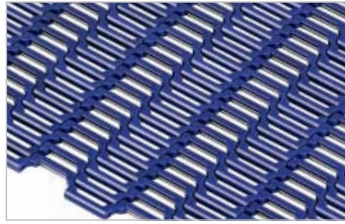
"Service is Our Product"
Ph 866-924-2808
sales@apexindustrialautomation.com

Plug and rod are interconnected as a single assembly to prevent accidental loss of plug component.

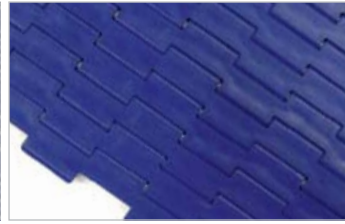
Available for the following HabasitLINK® modular belts



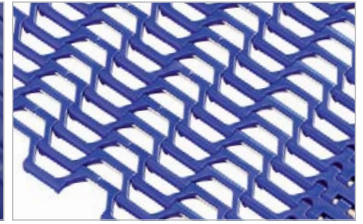
M0870
 Micropitch Flat Top



M0885
 Micropitch Flush Grid



M1065 HyCLEAN
 Flat Top



M1185
 Flush Grid

Available materials

Code	Description	Belt pitch	Saniclip material
M0870 POM	Flat Top	8.0 mm / 0.3"	POM (yellow)
M0870 PA	Flat Top	8.0 mm / 0.3"	PA (blue)
M0885 POM	Flush Grid	8.0 mm / 0.3"	POM (yellow)
M0885 PA	Flush Grid	8.0 mm / 0.3"	PA (blue)
M1065 HyCLEAN POM	Flat Top	12.7 mm / 0.5"	POM (yellow)
M1185 PP/POM	Flush Grid	12.7 mm / 0.5"	POM (yellow)
M1185 PA	Flush Grid	12.7 mm / 0.5"	PA (blue)

Key features	Your benefits
<ul style="list-style-type: none"> Operates in knife edge conveyors down to 6 mm diameter depending on specific belt style 	<ul style="list-style-type: none"> → Tight transfer For small footprint
<ul style="list-style-type: none"> Provided with a safe, tactile feel, non-slip surface 	<ul style="list-style-type: none"> → Works well even in wet and fatty environments
<ul style="list-style-type: none"> Extracted and reinstalled directly by line operators 	<ul style="list-style-type: none"> → Adjustable in seconds → No tooling required
<ul style="list-style-type: none"> Plug and rod are interconnected as a single assembly 	<ul style="list-style-type: none"> → Prevents the accidental loss of plug component
<ul style="list-style-type: none"> Robust 	<ul style="list-style-type: none"> → Easy manual extraction
Available in <ul style="list-style-type: none"> POM yellow Saniclip with POM blue belts PA blue Saniclip with PA beige belts 	<ul style="list-style-type: none"> → Easy identification
<ul style="list-style-type: none"> Multiple Saniclips can be installed along the belt length and at both edges 	<ul style="list-style-type: none"> → Allows easy opening at several locations

